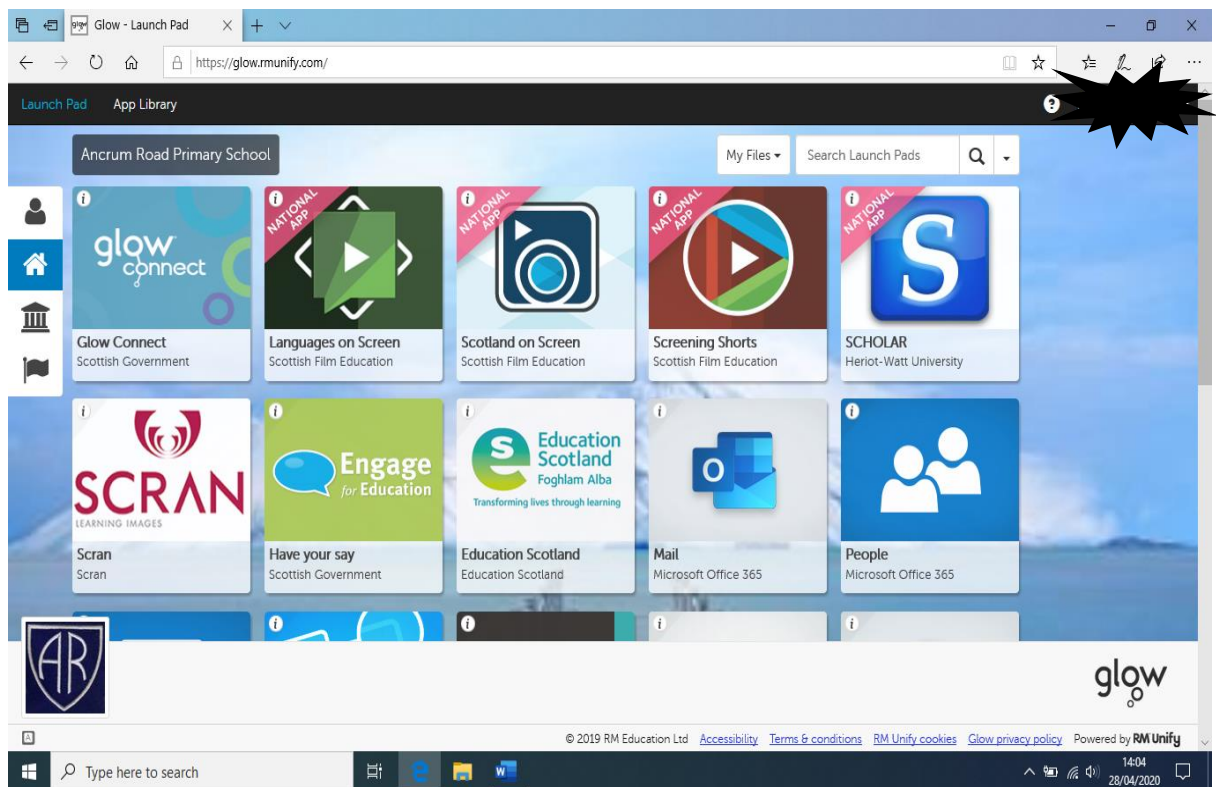


Setting up google classroom

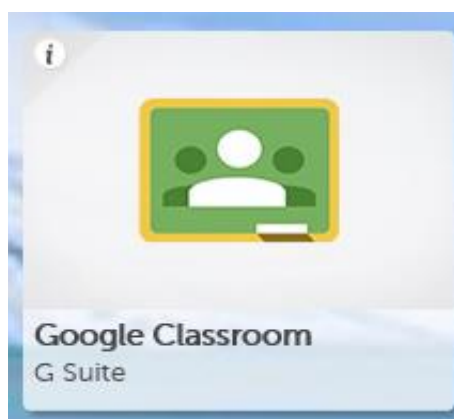
- 1) Click the link below to log into glow using username and password provided.

<https://sts.platform.rmunify.com/account/signin/glow>

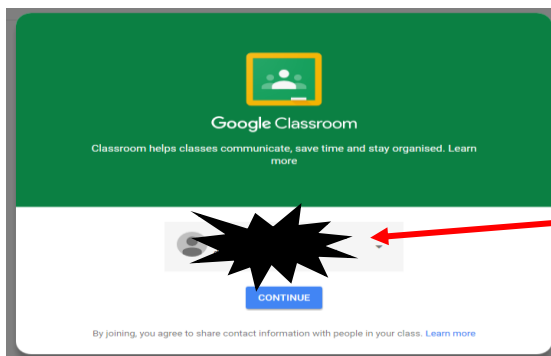
- 2) You will then see your launchpad. It should look like this:



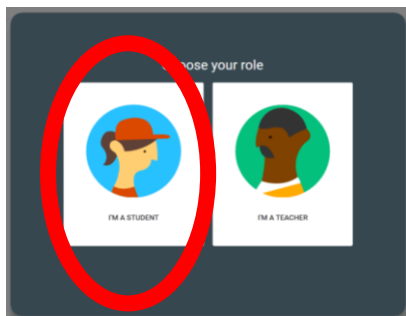
- 3) Scroll down and click on google classroom.



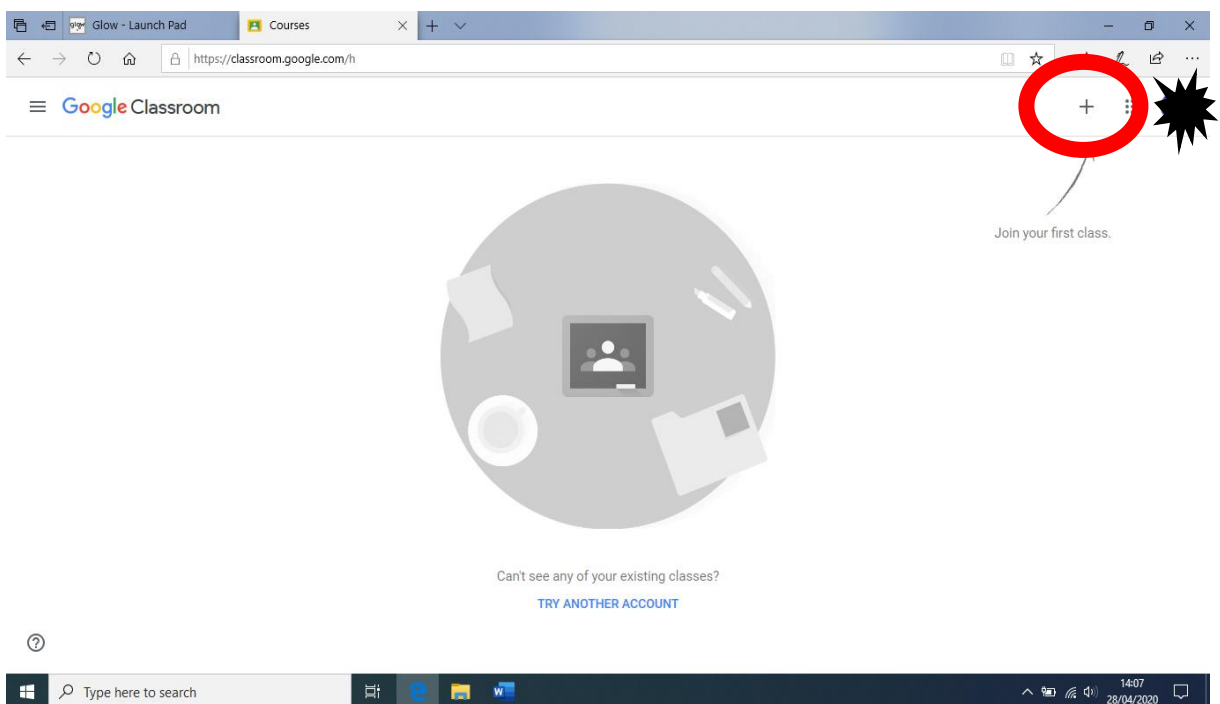
4) Check your name and email address is correct then click continue.



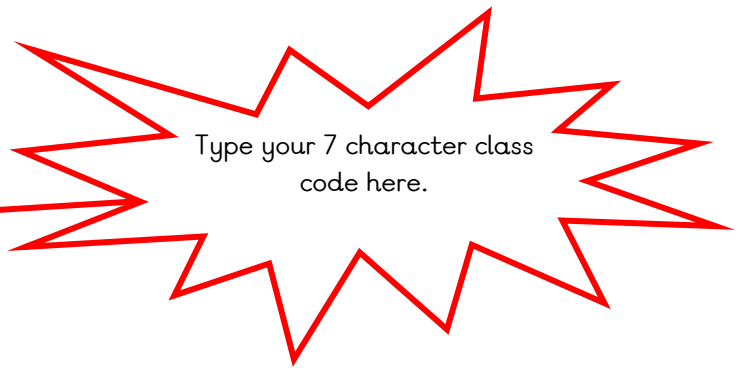
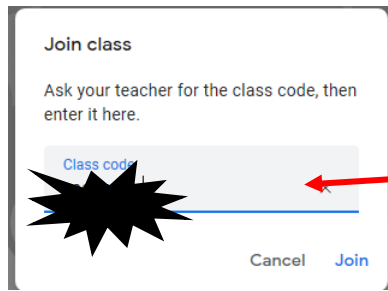
5) Click 'I'm a student'.



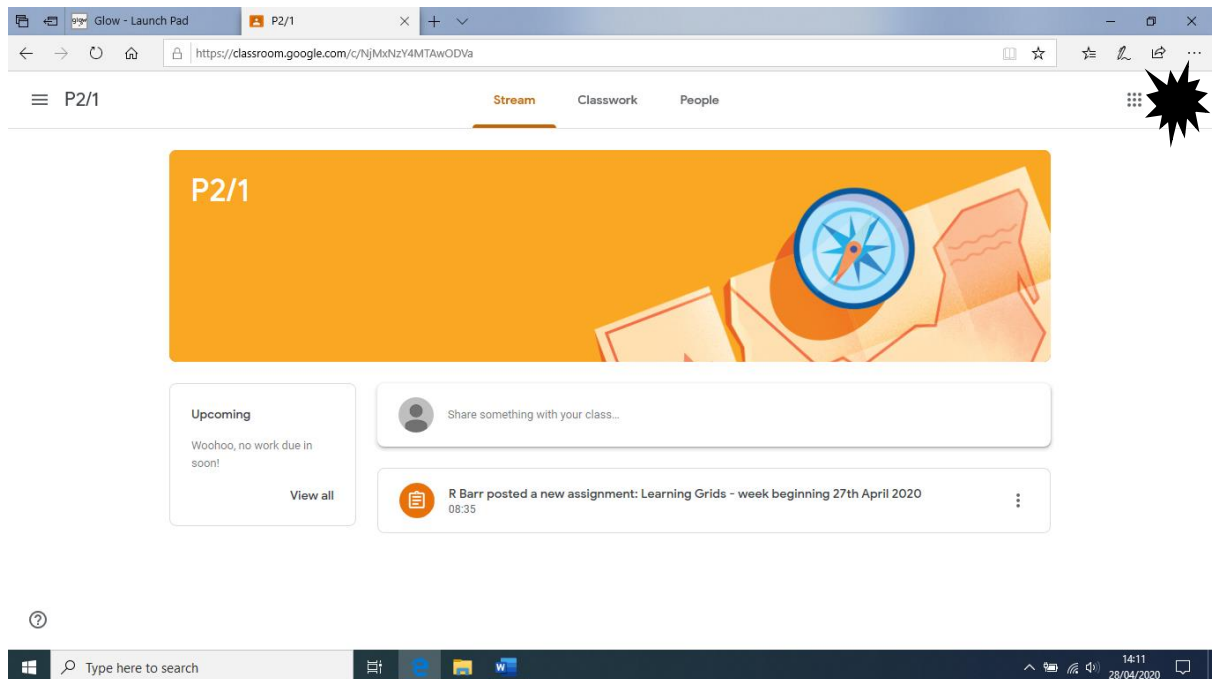
6) You will then see this screen. Click the + button in the top right hand corner.



7) You will then be asked for a code to join – type this in and click join.



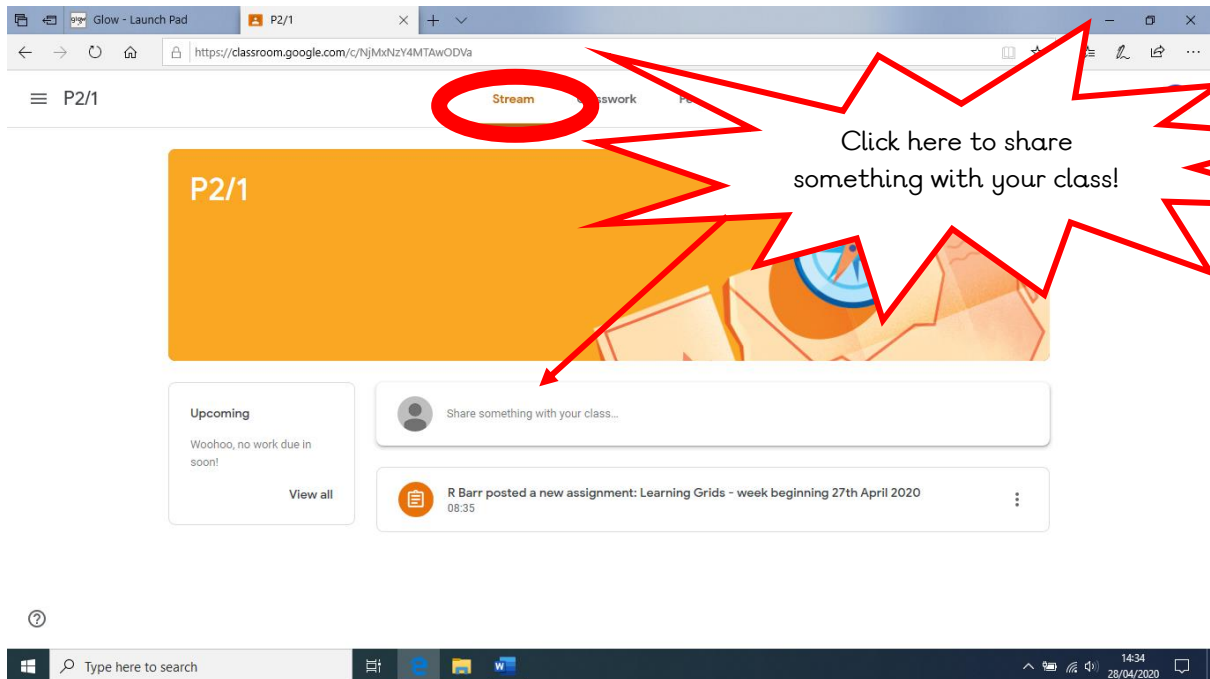
8) You are now part of your google classroom.



To use google classroom

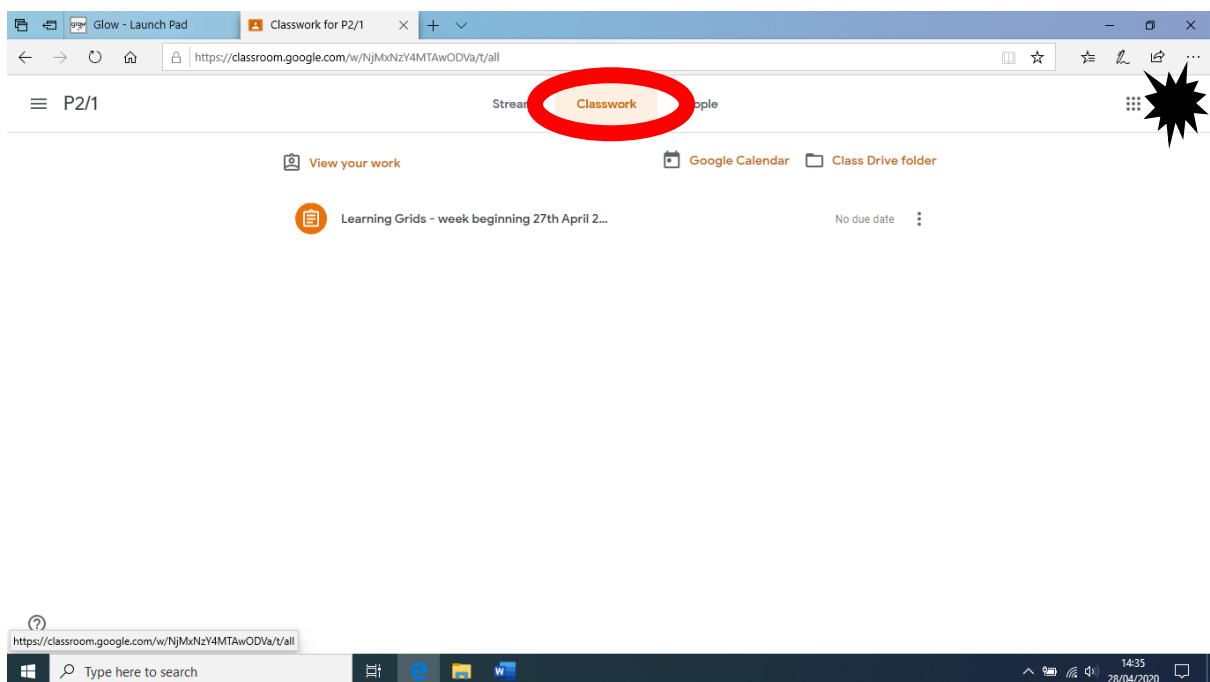
1) Under the stream tab:

- Share work with your teacher by clicking here – you can attach files/links/photographs by clicking on the 'add' button.



2) Under the classwork tab:

- Your teacher will share files and extra activities with you here.
- Learning grids can also be found here.



3) Under the people tab:

- You can message your teacher privately here.

The image is a screenshot of a web browser displaying the Google Classroom interface. The browser's address bar shows the URL <https://classroom.google.com/r/NjIMxNzY4MTAwODVa/sort-last-name>. The navigation tabs at the top are 'Stream', 'Classwork', and 'People', with 'People' circled in red. A black starburst icon is located to the right of the 'People' tab. Below the navigation, the page title is 'Teachers'. A list of teachers is shown, with the first entry being 'R Barr'. To the right of the teacher's name is a small envelope icon representing a message. A large red starburst callout bubble is overlaid on the message icon, containing the text 'Click here to message your teacher.' The Windows taskbar is visible at the bottom of the screen, showing the search bar, taskbar icons, and system tray with the time 14:35 and date 28/04/2020.